

GLOBAL ^{s.r.l.} TRADE

PROCESS CONTROL
AND INDUSTRIAL AUTOMATION



GROUP

GLOBAL ^{s.r.l.}
TRADE

GLOBAL ^{s.r.l.}
INFOTECH

ELLEGI ^{s.a.s.}
ELECTRON



MEASUREMENT AND FLOW SENSORS

FLOW INDICATOR



Application: Local display of air / gas / water fluid passage

Indication range: 0.14 - 4 ... 8 - 150 l / min water

Connections: from G1 / 8 "to G2" female, from 1/8 "to 2" NPT / from flange DN15 to DN200, from 1/2 to 2 "ANSI

Body material: brass, stainless steel-gray cast iron polyamide, polysulfone

Rotor: POM or PTFE or DEFLECTOR

p.max: 40 bar

t.max: 280 ° C

Viscosity: 1 - 150 mm²

FLOW METER WITH VARIABLE AIR



Application: Local measurement and display of air / gas / water fluid flow rate

Measuring range: 0.25 - 60 m³ / h water / 0.15 - 2500 Nm³ / h air

Connections: 1/8 "to 1" NPT, 1/8 "to 3 1/2"

G female / hose connector 8 mm / flange DN 15-80 / ANSI 1/2 "- 3"

Material: Stainless steel / polysulfone / trogamide / brass /

acrylic glass / cast iron

Max. Pressure: 16 bar

Max. Temperature: max 140 ° C

Accuracy: ± 6% / ± 4% / ± 2.5%

Option: reed contacts

FLOW METER / FLOW SWITCH FULLY METALLIC WITH VARIABLE AIR



Application: Measurement / Local display / Air / gas / water / acid fluid flow rate transmission

Measuring / intervention range: 0.5 - 130 000 l / h water / 0.015 - 2400 Nm³ / h air

Connections: DN15 / DN150 / ANSI flanges 3/4 "; 6"

Material: 1.4404 stainless steel, PTFE coating option, Hastelloy®

P. max: PN40 (16) bar

T - max: 350 ° C

Accuracy: ± 1.6% of full scale (± 2% of full scale for gas)

Options: contacts / 4-20 mA analog output / totalizer / Hart® / Profibus® PA / ATEX

FLOW SWITCH WITH VARIABLE AREA



Application: Measurement / Local display / Fluid / water / oil flow interception / etc

Intervention range: 0.2 - 120 l / min water / oil max viscosity 500 cSt

Connections: G 1/4 to G 1 1/4, / 1/4 to 1 1/4 "NPT female

Material: brass / acc. stainless steel.

Max pressure: 250 bar (brass), 350 bar (stainless steel)

Max temperature: 100 ° C

Accuracy: ± 5% FS

Reed contact

FLOW SWITCH A PADDLE



Application: Fluid / water / oil / etc flow interception

Intervention range: from 2.5 l / min. To 3600 m³ / h. water / from 1 m / s to 9.2 m / s air

Connections: from G 1/4 "to G 2", from 1/4 "to 2" NPT / flange from DN10. To DN50 / welding flange from DN40 to DN500

Material: brass, / acc. Stainless steel / PVC

Max pressure: 250 bar

Max temperature: 120 ° C

Reed contact

Accuracy: ± 3 / ± 5% FS

MEASUREMENT AND FLOW SENSORS



Application: Measurement / Local display / Water fluid flow transmission / etc.
Measuring ranges: from 0.015 l / min to 150,000 m³ / h of water
Connections: from G 1/2 "to G 3" from 1/2 "to 3" NPT / flange from DN 15 to DN 300 / flange ANSI from 1/2 to 12 "
Material: brass, stainless steel / PP / PE / PVC / PVDF / PTFE / ryton / trogamide / polysulfone
Max. Pressure: 640 bar
Max. Temperature: 350 ° C
Accuracy: ± 2.5% / ± 1.5% / ± 1% of full scale
Pulse output NPN / PNP / Relay / 4-20 mA analog output / digital displayT



**FLOW METER
TURBINE**

Application: Measurement / Local display / Flow transmission of viscous fluids / oil
Measuring range: 0.5 - 36 l / h ... 150 - 2500 l / min
Viscosity range: up to 30,000 cSt
Connections: from G 1/8 "to G 4 female, / flanges from DN25 to DN100, ASME flanges from 1 to 4"
Material: aluminum, acc. Inox / POM
Max. Pressure: 400 bar
Max. Temperature: 150 ° C
Accuracy: ± 0.5 / 1% of the measured value
Pulse output NPN / PNP / Analog output / contacts / digital display



**FLOW METER
WITH OVAL WHEELS**

Application: Measurement / Interception / Transmission of water / air fluid flow
Intervention range: 4 cm / s ... 2 m / s water / 1 m / s - 20 m / s air
Connections: G 1/4 "... G 3/4", 1/4 "NPT ... 3/4" NPT, M12x, Tri Clamp
Material: acc. Stainless steel. / nickel-plated brass
Max. Pressure: 100 bar
Max. Temperature: 80 ° C / 120 ° C
Repeatability: approx. 2% LED string, relay contacts, analog output



**FLOW METER
CALORIMETRIC**

Application: Measurement / Local display / Transmission of air / technical gases flow rate
Measuring range: 0.1 - 3.7 ... 0 - 185 NI / min air / argon / CH₄ / CO / CO₂ / N₂ / O₂ / H₂ / He etc
Connections: 1/8 "to 1/2" clamp, 1/4 "to 1/2" NPT female 1/4 "1/2" VCO / 1/4 "1/2" VCR / Swagelok 1/8 "- 1/2"
Material: acc. Stainless steel / nylon
Max. pressure: 10/35 bar)
Max. Temperature: 50 ° C
Accuracy: ± 1% / 1.5% of full scale
Output: 4 - 20 mA / 0 - 5/0 - 10, 1 - 5 V
Digital display



**METER/
REGULATOR
AIR AND GAS
DISPERSION
THERMAL**

Application: Measurement / Local display / Transmission of air / technical gases flow rate
Measuring range: 0.3 to - 3440 Nm³ / h air max. 224 Nm / s / other gases Argon / CH₄ / CO / CO₂ / N₂ / O₂ / H₂ / He
Connections: from G 1/2 "to G 2" M / from 1/2 "to 2" NPT M / Flange from DN15 to DN80 PN40 / from 1/2 "to 3" Cl. 150 to Cl. 300
Material: acc. Stainless steel
Max. Pressure: 100 bar
Max. Temperature: 180 ° C
Accuracy: ± 0.3% of full scale
Output: 2x 4-20 mA, pulse output, alarm output / RS485 Modbus RTU serial
Digital display



**METER
AIR AND GAS
DISPERSION
THERMAL**



MEASUREMENT AND FLOW SENSORS

METER
OF CAPACITY
ELECTROMAGNETIC



Application: Measurement / Local display / Transmission of water flow rate / conductive fluids

Measuring range: from 0.05 to 40376 m³ / h

Accuracy: ± 0.3% of reading ± 0.01% of Qmax

p. max: PN40

t. max: -20 ° C + 150 ° C

Connection: flanged from DN15 to DN1200 / ANSI from ½ "to 48 / from ½", ¾", G 1", G 2", 2" NPT

Lining material: hard rubber, soft rubber, PTFE / PFA, PA11

Material: stainless steel, PEEK PPS, PVDF / Hastelloy®, Tantalum

Output: 4-20 mA, totalizer pulse, alarm status

Communication: HART® / IO-Link

Approvals: ATEX (Gas / Staub)

METER
OF CAPACITY
ELECTROMAGNETIC
AD INSERTION



Application: Measurement / Local display / Transmission of water flow rate / conductive fluids

Measuring range: from 0.5 - 10 m / s

Connection: welded socket for DN80-2000 (3 "... 16")

Material: stainless steel (1.4571, 1.4404), 316L, PTFE, PFA

p. max: PN16 (16 bar / 90 ° C; 14 bar / 100 ° C)

t. max: -20 ... + 100 ° C, stainless steel / PTFE; process -20 ... + 60 ° C;

Conductivity: ≥20 μS / cm

Accuracy: ± 1.5% of reading

Output: analog / pulse / status output, digital display, Hart®, Profibus® / PA, ATEX, NEPSI

METER
RANGE TO VORTEX
A INSERTION



Application: Measurement / Local display / Water / gas / steam fluid flow rate transmission

Measuring range: liquid 5.2 - 157/284 - 8537 m³ / h

Gas from 89-2467081 Nm³ / h (20 ° C, 0 bar rel / Steam from 81 to 1324739 kg / h

Process connection: threaded or flanged insertion for pipes DN 80-DN 600 (3 "... 24")

Material: acc. Stainless steel

Max. Pressure: 100 bar

Max. temperature: 360 ° C (400 ° C)

Accuracy: liquids ± 1.2% of the measured value gas / vapor ± 1.5% of the measured value

Output: analog

Contacts: digital display

Option: Temperature and pressure transmitter, ATEX, IEC

METER
OF CAPACITY
ULTRASOUND
CLAMP-ON



Application: Measurement / Local display / Transmission of water flow rate / etc

Measuring range: 0 - 30 m / s liquid

Measurements: volume, speed, temperature

Connection: Clamp-on for pipes with diameter DN10 ... DN6000

Maximum temperature: 150 ° C

Accuracy: ± 1% ... ± 2.5% of the measured value

Outputs: 2 x 4-20 mA, pulses, Micro-USB, Relay, RS232, RS485, totalization

METER
OF CAPACITY
ULTRASOUND
ON LINE



Application: Measurement / Local display / Transmission of water flow rate / etc

Measuring range: 0.08 - 20 ... 2.5 - 630 l / min liquid

Connections: from G ½ to G3 femin

Material: brass / stainless steel

Max pressure: 16 bar

Max temperature: 90 ° C

Accuracy: ± 0.7% of the measured value + 0.7% FS

Pulse output, analog output, relay contacts, digital display

MEASUREMENT AND FLOW SENSORS



Application: Flow rate measurement of water / gas / air fluids etc.

Connection: DN50 to DN 600,

Material: M steel, stainless steel, Hastelloy C, Titanium, Monel, Tantalum

P. max: PN420 BAR

T. max: + 500 ° C



FLOW MEASUREMENT
WITH CALIBRATED ORIFICE
BY PRESSURE
DIFFERENTIAL

Application: Flow rate measurement of water / gas / air fluids etc.

Connection: G1 "to G 1½", 1 "to 1½" NPT, DN25 to DN 80, ANSI 1 to 3 "

Material: stainless steel

P. max: 400 bar

T. max: 1175 ° C

Probe length: 50 to 8000 mm (2 "-600"):



FLOW MEASUREMENT
AIR / GAS WITH HOSE
OF PITOT BY PRESSURE
DIFFERENTIAL

Application: Measurement / Local display / Transmission of water flow rate / etc

Measuring range: depends on the flow channel / weir

Connection: G 1½ ", G2", 1½ "NPT, male thread 2" NPT, Flange DN80, 125, 150, ANSI 3 ", 5", 6 "

Connection material: polypropylene

P. max .: 3 bar

T. max .: 90 ° C

Accuracy: depends on the flow channel / weir

Power supply: 12 - 36 V DC, 2 wires

Output: 4 - 20 mA, relay

LCD indication and programming unit



METER
FLUID FLOW
ULTRASOUND
FOR OPEN CHANNELS

Application: Measurement / Local display / Transmission of water flow rate / etc

Measuring range: 0.5 '-7" ... 50-500 m³ / h water

Connections: wafer DN 25-DN 300

Material: steel, acc. stainless steel, PTFE, Hastelloy®

P. max .: PN 40 / PN16 DN 100-200 / PN10 from DN 250

T. max .: -40, 200 ° C (-40 ... + 300 ° C on request)

Accuracy: ± 2.5% FS

Option: contact, 4-20 mA, ATEX, Hart®, Profibus® PA



FLOW METER /
FLOW SWITCH
WITH DEFLECTOR



MEASUREMENT AND PRESSURE SENSORS

PRESSURE GAUGE
OF PRESSURE
A BOURDON TUBE



Application: Measurement / Local display / water / air fluid pressure

Measuring range: -1 up to 0 ... 0 up to 1000 bar

Connections: G 1/4", G 1/2" male, brass / stainless steel

Body material: acc. stainless steel, steel, aluminum

Body diameter: 63, 80, 100, 160mm

Class accuracy: 1.6 or 1.0%

Option: contacts, glycerine filling

PRESSURE GAUGE
OF PRESSURE
DIAPHRAGM



Application: Measurement / Local display / low pressure of water / air fluids

Measuring range: - 250 ... 0 up to 0 ... +250 mbar -1 ... 0 up to 0 ... +40 bar

Connections: G 1/2" male, steel, acc. Stainless steel

Body material: acc. Stainless steel

Body diameter: 100, 160 mm

Accuracy class: 1.6

Option: contacts, glycerine filling

PRESSURE GAUGE
OF PRESSURE
DIAPHRAGM
FOR CORROSIVE FLUIDS



Application: Measurement / Local display / low pressure of water / acid fluids

PVDF / Hypalon / PTFE sealing diaphragm

Measurement range: 0 up to 1.6 / 0 up to 16 bar

Connection: G 1/4", G 1/2", 1/2" NPT

Case material: stainless steel

Case diameter: 63/80/100 mm

Accuracy: class 1.6

Options: glycerine filling, remote version, vibration damper

PRESSURE GAUGE
WITH CAPILLARY
OF SEPARATION /
FACADE MEMBRANE



Application: Measurement / Local display / low pressure dirty fluids / water etc.

Measurement range: 0 up to 2.5 / 0 up to 10 bar

Connection: Tri Clamp 1"-3", Sanitary swivel / G 1/2"-1 1/2" / 1/2" / 1 1/4" NPT, M20 x 1,5,
M48 x 3 stainless steel

Diaphragm: 18 up to 64 mm, stainless steel

Case material: stainless steel, aluminum

Case diameter: 100 mm

Accuracy: class 1.6

Options: contacts, glycerine filling, / remote version, vibration damper

PRESSURE GAUGE
DIFFERENTIAL



Application: Measurement / Local display / water / air fluid pressure

Measuring range: 0 up to 0.1 bar ... 0 up to 25 bar

Connections: G 1/2", 1/2" NPT male, 1/4" NPT female, acc. Stainless steel

Body material: acc. Stainless steel

Body diameter: 100, 150 mm

Class accuracy: 1.6%

Option: glycerine filling, contacts

MEASUREMENT AND PRESSURE SENSORS



Application: Measurement / Shut-off / pressure of water / air fluids

Intervention range: from - 1 up to 160 bar

Connections: R ½ "male and ¼" female

Body: brass, acc. Stainless steel

Max temperature: 85 ° C (fluid)

Repeatability: <1% of the set point

Micro switch output, ATEX Eexia / EExd



PRESSURE SWITCH

Application: Measurement / Interception / pressure of water / air fluids

Intervention range: 4 mbar up to 16 bar

Connections: ¼ ", ½" NPT female, ½ "NPT, G ½" male

Body: acc. stainless steel, aluminum

Max temperature: 85 ° C (fluid)

Repeatability: <1% of the set point

Micro switchA / TEX Eexia output



**PRESSURE SWITCH
DIFFERENTIAL**

Application: Measurement / Shut-off / low air pressure neutral gases

Intervention range: 20 up to 1000 Pas

Connections: 6 mm fitting

Body: PA

Max temperature: -20 ... +70 ° C (fluid)

Micro switch output



**DIFFERENTIAL
PRESSURE SWITCH
FOR NEUTRAL GASES**

Application: Measurement / Transmission of pressure / water / air fluids etc.

Thin film / ceramic / piezoresistive sensor

Measuring range: -1 up to 1000 bar

Connections: G ¼ " / G ½" / G 1 "male / ¼" - ½ "NPT stainless steel.

Class accuracy: 0.25 or 0.5% or 1%

4-20 mA / 0-5 Vdc / 0-10 Vdc analog output



**TRANSMITTER
ELECTRONIC PRESSURE**

Application: Measurement / Local display / Water / air fluid pressure transmission etc.

Measuring range: from -1 to 1600 bar

Connections: G ¼ ", G ½" male, ¼ "NPT, ½" NPT acc. Stainless steel

Body material: glass fiber reinforced plastic

Body diameter: 74 mm

Accuracy class: 0.5

Power supply: battery / 24 Vdc ± 20%

Option: contact, analog output, peak memory



**PRESSURE GAUGE
OF DIGITAL PRESSURE**



MEASUREMENT AND PRESSURE SENSORS

Application: Measurement / Local display / Shut-off / Water / air fluid pressure transmission etc.

Measuring range: -1. + 600 bar

Accuracy: ± 0.5% of FS

T. max.: + 85 ° C (Fluid)

Connection: G ¼

Material: Connection of stainless steel 1.4542 Housing of galvanized steel / die-cast metal

Output: 1 analog 4-20mA or 0-10V output (switchable)

2 PNP switching outputs

Features: rotatable and reversible display; swivel electrical connection

Status indication of the switching point via LED



TRANSMITTER
OF PRESSURE /
ELECTRONIC PRESSURE SWITCH
WITH DISPLAY

Application: Measurement / Local display / Water / air fluid pressure transmission etc.

Capacitive sensor

Membrane Stainless steel, Hastelloy-C®, Tantalum

Measuring range: -1 ... +600 bar

T. max.: 200 ° C

Power supply: 11.9 - 45 VDC

Connections: ¼ "NPT female, ½" NPT female or flanged DN 15 - 100

Accuracy: ± 0.075% of calibration

Analog output, HART®, ATEX EExia / EExd



TRANSMITTER
ELECTRONIC PRESSURE
HIGH ACCURACY

Application: Measurement / Local display / Water / air fluid pressure transmission etc.

Membrane Stainless steel, Tantalum, Hastelloy-C®, PTFE

Measuring range: from 250 mbar. to. +600 bar

T. max.: 350 ° C

Connections: threaded or flanged (nominal size DN 15-DN 100

Analog output. HART®, ATEX Eexia / Eexd

Accuracy: ± 0.075% of calibration + separator influence



TRANSMITTER
OF PRESSURE
WITH SEPARATOR

Application: Measurement / Local display / Water / air fluid pressure transmission etc.

Measuring range: 0.75-15 mbar ... 4.137-413.7 bar

Connections: ¼ "NPT, ½" NPT

Material: stainless steel / Hastelloy-C® / Monel / Tantalum

Max. Temperature: 120 ° C

Accuracy: ± 0.075% of meas. Range

Analog output, HART®, ATEX Eexia / Eexd

Option: frequency / totalizer output for flow measurements



TRANSMITTER
DIFFERENTIAL
PRESSURE

Application: Measurement / Local display / Water / air fluid pressure transmission etc.

Measuring range: 0-250 mbar ... 0-206.8 bar

Connections: flange, thread, sanitary connection

Material: stainless steel / Hastelloy-C® / Monel / tantalum

Max. Temperature: 200 ° C

Class accuracy: 1% / 1.6%

Output: 4 - 20 mA. HART®, ATEX Eexia / EExd



TRANSMITTER
DIFFERENTIAL PRESSURE
WITH SEPARATOR

MEASUREMENT AND PRESSURE SENSORS



Application: Measurement / Local display / Low air pressure transmission etc.

For air or neutral gases (e.g. monitoring of filter systems)

Measurement range: from 50 Pas 0-5000 Pas

Connection: 6x8 mm hose connection

Indication: 4 digit LED

4-20 mA analog output, 2 relays (max 230 VAC, 0.5 A)

Power supply: 24/110/230 VAC / 24 VDC



TRANSMITTER
DIFFERENTIAL PRESSURE
FOR AIR

MEASUREMENT AND LEVEL SENSORS

Application: Measurement / Local display / Water fluid level transmission / etc

Visual local indicator without auxiliary power supply

Plastic / glass tube / plastic / ceramic colored magnetic rollers display

Measuring length: from 100 to 6000 mm

Connections: G 1/2", G 3/4", G1", G1 1/4" / 1/2", 3/4", 1", 1 1/4" NPT / DIN flange DN15 50 / ASME-flange 1/2"-2"

Material: acc. Stainless steel / aluminum / PVC, PP, PVDF

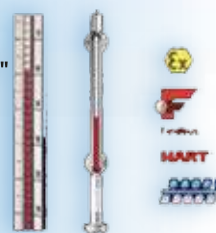
Max pressure: 100 bar

Max temperature: 400 °C

Min / Max limit alarm contact options

4-20 mA transmitter option

Certificates: ATEX



TRANSMITTER INDICATOR
OF LEVEL
BY -PASS DERIVATION

Application: Measurement / Local display / Interception / Water fluid level transmission / etc

Contact: max. 4 reed contacts

Measuring length: max. 6 meters

Connections: from G1 / 8 to G 2 "male / flanges from DN50 to DN125, from 1 1/2" to 4 "

Material: brass, acc. inox., PVC-U, PP, PVDF, NBR

Max. Pressure: 100 bar

Max. Temperature: 150 °C

Liquid density: > 0.5 g / ml

Analogue senal output: resistive, 4-20 mA, LC display, Contacts, HART®, Profibus®, Fieldbus®

Accuracy: 0.5% on L = 2 m



TRANSMITTERS /
LEVEL SWITCHES
MAGNETIC
FLOAT

Application: Water fluid level interception / etc

Contacts: 1 micro - switch

Material: Polypropylene, hypalon / PTFE coated PP

Connection: cable gland G 1 " ÷ G 2"

Max. Pressure: 15 bar

Max. Temperature: 150 °C



LEVEL SWITCH
PEAR FLOAT

Application: Water fluid level interception / etc

Electrodes: max 6 length: max- 3000 mm

Contacts: 5 relay contacts

Connections: G 1/2", G 1 1/2" / SWIVEL DIN 11851 hygienic / Tri-Clamp® / welded sleeve

Material: Stainless steel, Hastelloy®, Titanium

Max. Pressure: 30 bar

Max. Temperature: 150 °C

For conductive liquids (> 20 µS / cm)



LEVEL SWITCH
CONDUCTIVE



MEASUREMENT AND LEVEL SENSORS

TRANSMITTERS /
LEVEL SWITCHES
CAPACITIVES FOR LIQUIDS



Application: Measurement / Shut-off / Transmission level of water / oil fluids / etc
Probe length: max. 4 m
Contact: 1 relay (max 250 VAC, 1A)
Connection: G 1" - M stainless steel or G2" -M in PVDF
Probe material: Stainless steel. with PTFE or PVDF coating
Maximum pressure: 30 bar
Maximum temperature: 90 ° C (125 ° C)
Power supply: 24 ÷ 110 ÷ 230 VAC / 18 ÷ 36 VDC
4-20 mA analog output

CAPACITIVE
LEVEL SWITCHES
FOR LOOSE



Application: Bulk solids level interception / etc
Probe length: max. 3 m, with 15 m cable
Contact: 1 relay (max 250 VAC, 1A)
Connection: G 1"-M stainless steel or
Probe material: acc. stainless steel. with PTFE jacket / or cable with PP jacket
Maximum pressure: -0.1 + 0.5 bar
Maximum temperature: -20 + 80 ° C
Power supply: 12 ÷ 35 VDC (Atex 12..30 VDC)

LEVEL SWITCHES
A VIBRATION
FOR LIQUIDS



Application: Water / oil fluid level interception etc.
Contacts: 1 PNP / NPN / RELAY electronic contact
Connections: G 3/4", G1" male, 3/4" NPT, 1" NPT male
Tri-Clamp® DIN 32676 / sanitary fixtures DIN 11851 / DIN- Flanges: DN25 ÷ DN50 /
ANSI-flanges: 1" ÷ 2"
Material: acc. Stainless steel. 1.4404
Max. Pressure: 45 bar
Max.temperature: 130 ° C (150 ° C CIP-cleaning)
Viscosity: up to 5000 mm² / s
Certificates: ATEX

LEVEL SWITCHES
A VIBRATION
FOR LOOSE



Application: Bulk solids level interception / etc
Probe length: max. 3 m
Contact: 1 relay (max. 250 VAC, 1A), 25 VA
Connections: G 1 1/2 male
Material: acc. stainless steel. 1.4305 (303)
Max. Pressure: 25 bar
Max temperature: 80 ° C
Power supply: 24 ÷ 110 ÷ 230 VAC / 18 ÷ 36 VDC
Certificates: ATEX

LEVEL SWITCHES
WITH ROTATING FAN
FOR LOOSE



Application: Bulk solids level interception / etc
Contact: 1 micro switch
Connections: G 1", G 1 1/4", G 1 1/2 male / flange Ø 110 ÷ 200 mm
Material: shaft / Rotor: acc. Stainless steel
Max.pressure: -0.5 bar + 0.5 bar
Max. Temperature: 200 ° C
Version option: ATEX

MEASUREMENT AND LEVEL SENSORS



Application: Bulk solids level interception / etc
Contact: 1 micro switch
Connections: circular flange
Material: membrane: Nitril, NBR, FPM, acc. stainless steel.
Retention ring: steel, acc. stainless steel, aluminum
Max. Pressure: 0.5 bar
Max. Temperature: 200 °



**LEVEL SWITCHES
MEMBRANE
FOR LOOSE**

Application: Measurement / Local display / Interception / Transmission of water / oil fluid level etc.
Measuring range: up to 20 meters
Process connections: threaded G 3/4", 3/4" NPT / flange DN 40 ÷ DN100 / ANSI 1 1/2" ÷ 4"
Material: stainless steel, PTFE
Working pressure: -1 + 40 bar
Working temperature: -50 ... +250 ° C
Accuracy: ± 3 mm or 0.03% of the measured value
Power supply: 12 - 30 VDC, 4-wire
Output signals: 4 - 20 mA, PNP contact
Ex ia (ATEX and IECEx)



**LEVEL TRANSMITTERS
GUIDED WAVE RADAR
FOR LIQUIDS AND SOLIDS**

Application: Measurement / transmission of water fluid level / etc
Measuring range: liquids up to 23 m
Connection: BSP-, NPT- male flange thread 3" - 6" (DN, ANSI, JIS) milk connection, Tri-Clamp®
Material connection: stainless steel, aluminum, PP, PTFE
P. max.: 25 bar
T. max.: + 180 ° C
Accuracy: ± 3 mm
Power supply: 20-36V DC (Ex = 20-30V DC), 2 wires
Output: 4-20 mA Approval HART® Ex ia (ATEX and IECEx)



**TRANSMITTER
RADAR LEVEL
WITHOUT CONTACT**

Application: Measurement / transmission level of water / solid fluids / etc
Measuring range: liquids up to 25 m / solids up to 10 meters
Connections: G 1 1/2", G2", 1 1/2" NPT, 2" NPT AG flange DN 80-125-150 / ANSI 3"-5"-6"
Connections material: Polypropylene
Max. Pressure: 3 bar abs., **Max. temperature:** 90 ° C
Accuracy: ± 0.2% of MW ± 0.05% of ME
Power supply: 12-36 VDC, 2-wire
Output: 4-20mA, relay
LCD-Indication, programming unit



**TRANSMITTERS
OF LEVEL
ULTRASONIC**

Application: Measurement / transmission of water fluid level, etc.
Measuring range: 0.1 m c.a ... 0-200 m t c.a.
Material: acc. inox., polyurethane cable
Max. Level overload: 3 times full scale, **max. temperature:** 60 ° C
Accuracy: ± 0.5% FS



**TRANSMITTER
OF LEVEL
SUBMERSION
FOR WELLS AND TANKS IP 68**



MEASUREMENT AND LEVEL SENSORS

TRANSMITTER
OF LEVEL
WITH HYDROSTATIC HEAD



Application: Measurement / Local display / Transmission of water / oil fluid level etc.

Facing membrane execution

Materials in contact: Stainless steel, Hastelloy-C[®] Tantalum, PTFE

Measuring range: from 1 mt c.a to 200 mt c.a

T. max.: 350 °C

Connections: threaded from 1/2" to 2" G / Fl angled from DN 15 to DN 100

Accuracy: ± 0.075% of calibration + separator influence

Output: 4 - 20 mA, HART[®], ATEX

TRANSMITTER
DIFFERENTIAL LEVEL
FOR PRESSURE TANKS



Application: Measurement / Local display / transmission of water / oil fluid level etc.

Measuring range: 0-2500 mmC.a ... 0-150 mC.a

Connections: DN50 / DN80 / DN100 flange

Material: Stainless steel, Hastelloy-C[®], Monel, Tantalum

Max. Temperature: 200 °C

Class accuracy: 1 / 1.6%

Output: 4 - 20 mA, HART[®], ATEX



MEASUREMENT AND TEMPERATURE SENSORS

THERMOSTAT
ELECTRONIC
CONNECTION M12 x 1



Application: Max temperature interceptor - 100 °C - 1000 °C

Calibration: Resistance thermometer PT 100 IEC 754 / Tc K IEC 584

Output: digital PNP max range - 100 ° + 500 °C / 0 - 1000 °C Tc K

Power supply: 12-30 Vdc

Connection body material: STAINLESS STEEL

THERMOCOUPLE
WITH CONNECTOR
STANDARD / MIGNON



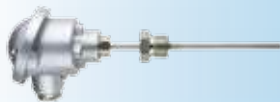
Application: Max temperature measurements Tc J 600 °C / Tc K 1200 °C

Calibration: TC J / TC K / others required

Diameters: standard 0.025 / 05/1 / 1.5 2/3 / 4.5 / 6 mm

Length: standard 250 - 500 - 1000 -1250 -1500 mm

THERMOCOUPLE/
THERMISTOR
CONNECTION HEAD
IN ALUMINUM



Calibration: Pt100 / Pt1000 / TC J / TC K / other calibrations on request

Max. Temp.: -50 + 500 Pt100 / Tc J 600 °C / Tc K 1200 °C

Diameters: standard 3 / 4.5 / 6/8 / mm / other diameters on request

Length: from 50 to 50,000 mm

Material: Pt100 metal sheath in AISI 316 / TC J AISI 321 / TC K Inconel 600

Option: 1/8 "-1/4" 3/8 "/ 1/2" 3/4 "/ 1" Gas -Npt male stainless steel fixed fitting.

Option: built-in transmitter 4-20 mA or 0-10 Vdc output

THERMOCOUPLE/
THERMISTOR
WITH EXTENSION CABLE
INTEGRATED



Application: Max temperature measurements -200 °C -1200 °C

Calibration: Pt100 / Pt1000 / TC J / TC K / others on request

Diameters: 0.25 / 0.5 / 1 / 1.5 / 2/3 / 4.5 / 6mm

Length: from 50 to 50,000

Insulation: silicone rubber / Teflon / Kapton / glass fiber extension cable

MEASUREMENT AND TEMPERATURE SENSORS

Application: Temperature measurements. max Tc J 600 ° C / Tc K 1200 ° C
Calibration: J Constantan Iron / K Cromel Allumel IEC 584
Diameters: standard 2/3 / 4.5 / 6 mm
Length: standard 250 - 500 - 1000 -1250 -1500 mm



**THERMOCOUPLE
WITH CONNECTOR
M12 x 1 / M8 x 1**

Application: Max temperature measurements - 200 ° C - 500 ° C
Calibration: PT 100 / PT1000 IEC 754
Diameters: standard 2/3 / 4.5 / 6 mm
Length: standard 100 - 150 - 250 - 350 - 500 - 750 - 1000 mm



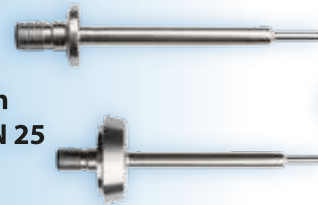
**THERMORESISTANCES
WITH CONNECTOR
M12 x 1 / M8 x 1**

Application: Max temperature converter - 200 ° C - 500 ° C
Calibration: PT 100 EC 754
Output: 4-20 mA 2-wire technique
Power supply: 12-30 Vdc
Connection body material: PLASTIC / STAINLESS STEEL



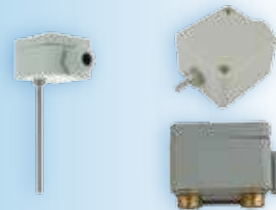
**TRANSMITTER
FOR PT100
CONNECTION M12 x 1**

Application: Max temperature measurements -50 ° C - 200 ° C
Calibration: PT 100 / PT1000 IEC 754
Diameters: standard 8 mm tapered to 4 mm length from 35 to 100 mm
Process connection: AISI 316 TRI-CLAMP 3/4 "or SWIVEL DIN 11851 DN 25
Electropolishing with ROUGHNESS better than Ra 0.8



**THERMORESISTANCES
A M12x CONNECTOR 1
HEALTH / FOOD**

Calibration: NTC / PT 100 / PT1000 IEC 754
Max temp .: -50 ° C - 150 ° C
Execution for external / internal ambient air temperature
Execution for air / water temperature in delivery / return channel
Execution for air / water channel external pipe contact temperature
Case: plastic electrical connections IP 65/67
Option: built-in transmitter 4-20 mA output



**THERMORESISTANCES
THERMISTORS
BY SECTOR
BUILDIN AUTOMATION**

Application: Max temperature measurements Tc J 400 ° C / Tc K 600 ° C
Calibration: TC J / TC K
Transition cup in polymer for high temperatures 350/500 ° C
Diameters: standard 1 / 1.5 mm / others on request
Length: from 50 to 900 mm



**THERMOCOUPLE
FOR APPLICATIONS
PLASTIC MOLDING**

Application: Max temperature measurements -50 ° C - 100 ° C
Calibration: NTC / PTC / PT 100 / PT1000 IEC 754
Cable: extension in TPE Temp. Max 105 ° C / others on request
Option: stainless steel protective tube diameter 6 mm



**THERMISTORS /
THERMORESISTANCES
RUBBER
THERMOPLASTIC IP 68**

DIGITAL TRANSMITTER
OF TEMPERATURE
AND HUMIDITY



+/- 0.2 ° C / 0- 100% RH +/- 2%
Diameter: standard 6 mm length from 80 to 500 mm AISI 316 L
Communication: serial RS 485 MOD -BUS RTU protocol baud rate 38400
Max. Devices that can be connected to the network: 32
Power supply: 9 - 30 Vdc consumption 10 mA max distance transmiss. 1 Km
Built-in communication led: power on / error / transmission active
Electrical connections: M12 5-pole IP 67 connector
Option: fixing bracket / T-splitter boxes / M12 connector cable extensions
Configuration kit: EVOPLATFORMSET

MEASUREMENT AND HUMIDITY SENSORS

TRANSMITTERS
OF HUMIDITY
AND TEMPERATURE
INDUSTRIAL VERSION



Wall mounting version for outdoor environment
Application range: 5 ~ 95% RH (no condensation) / -20 ~ 80 ° C
Linear output: 4-20 mA / 0-10 Vdc 2/3 wire technique
Case: Polycarbonate
Protection: IP 65
Accuracy: +/- 2%; +/- 0.5 ° C
Power supply: 24 Vac / dc
Sintered filters option to protect dusty environments

Channel mounting version
Application range: 5 ~ 95% RH (no condensation) / -40 ~ 125 ° C
Linear output: 4-20 mA / 0-10 Vdc 2/3 wire technique
Case: Polycarbonate
Protection: IP 65
Accuracy: +/- 2%; +/- 0.5 ° C
Power supply: 24 Vac / dc
Sintered filters option to protect dusty environments

Version with separate electronics for high temperatures and pressures
Application for high temperatures max 200 ° C
Application for high temperature and pressure measurements 160 ° C / 25 Bar max.
Scope: 5 ~ 95% RH (no condensation)
Linear output: 4-20 mA / 0-10 Vdc 2/3 wire technique
Case: Polycarbonate
Protection: IP 65
Accuracy: +/- 2%; +/- 0.5 ° C
Power supply: 24 Vac / dc
Sintered filters option to protect dusty environments

TRANSMITTERS
OF HUMIDITY
AND TEMPERATURE
LIGHT VERSION



Wall-mounted version for clean air
Application range: 10 ~ 90% RH (no condensation) / 0 ~ 50 ° C
Linear output: 4-20 mA / 0-10 Vdc 2/3 wire technique
Serial communication option: RS 485 Mod-bus RTU protocol
Case: Polycarbonate
Protection: IP 30
Accuracy: +/- 3%; +/- 1 ° C
Power supply: 24 Vac / dc.
Option: Integrated 4-digit LCD display

MEASUREMENT AND HUMIDITY SENSORS

Duct mounting version for clean air

Application range: 10 ~ 95% RH (no condensation) / 0 ~ 50 ° C
 Linear output: 4-20 mA / 0-10 Vdc 2/3 wire technique
 Case: Polycarbonate
 Protection: IP 30
 Accuracy: +/- 3%; +/- 1 ° C
 Power supply: 24 Vac / dc

Wall mounting version for outdoor environment

Application range: 10 ~ 95% RH (no condensation) / -5 ~ 50 ° C
 Linear output: 4-20 mA / 0-10 Vdc 2/3 wire technique
 Case: Polycarbonate
 Protection: IP 65
 Accuracy: +/- 3%; +/- 1 ° C
 Power supply: 24 Vac / dc.

Wall mount integrated cable version for general applications

Application range: 5 ~ 95% RH (no condensation) / -10 ~ 70 ° C
 Linear output: 4-20 mA 2-wire technique
 Case: Polycarbonate
 Protection: IP 65
 Accuracy: +/- 3%; +/- 1.5 ° C
 Power supply: 24 V dc.



TRANSMITTERS
OF HUMIDITY
AND TEMPERATURE
LIGH VERSION

PH AND CONDUCTIVITY MEASUREMENT AND SENSORS

Range PH 0 +14 PH accuracy 0.05 Ph

ORP range - REDOX +/- 2000 mV accuracy +/- 3 mV
 4-20 mA output minimum range programmable scale 0.5 Ph or 30 Mv
 Integrated Pt1000 sensor range - 40 '130 ° C accuracy +/- 1 ° C
 4-20 mA output minimum range programmable scale and 10 ° C
 Maximum pressure: 16 Bar
 Strike attachment 1 ½ Gas F swivel mounting on sleeve to be welded or glued
 Material probe holder: PVC / PVDF / PP / INOX / diameter 23 mm x immersion 80 mm
 Incorporated electronics with display and programming and sensor configuration keys
 Case in PPS IP 67 connection 2 x M12 x1 5 P alim. 12-30 Vdc



TRANSMITTERS
OF PH or ORP REDOX

Range 0.05 uS / cm - 10 mS / cm - 2S / cm accuracy 3% measured value

4-20 mA output programmed scale range 0.05 -20 uS / cm - 0.5-200 uS / cm - 5 -uS-10 mS / cm
 Response time: 5 seconds
 Temperature range: - 40 + 150 ° C accuracy 1 ° C
 4-20 mA output minimum range programmable scale and 10 ° C
 Maximum pressure: 16 Bar
 Strike attachment 1 ½ Gas F swivel mounting on sleeve to be welded or glued
 Material probe holder: PVC / PVDF / PP / INOX / diameter 23 mm x immersion 80 mm
 Incorporated electronics with display and programming and sensor configuration keys
 Case in PPS IP 67 connection 2 x M12 x1 5 P power supply 12-30



TRANSMITTERS
OF CONDUCTIVITY

GAS MEASUREMENT AND SENSORS



Multi-zone control and monitoring units for 4 - 8 - 16 - 32 - 64 - 128 - 256 sensors max

Input signals ing. 4-20 mA or RS 485 serial communication
 2 closed loops RS485 (EIA-485) galvanically isolated
 Alarm relay outputs max 256
 Installation in SAFE area or ATEX and SIL 1 / SIL2 certified (EN50402)
 Event memory that can be consulted from the display or downloaded on a PC
 Liquid crystal graphic display + double row 9 LED optical indications
 The control units are available in IP65 plastic box or 19 "rack



CENTRAL
OF GAS DETECTION
A MICROPROCESSOR

**DETECTORS
OF FLAMMABLE GAS**



Infrared pellistor sensor / catalytic sensor
ATEX classified areas EExd Group I / Group II / Group III / SIL 2 HW, SIL3 SW certified
Wide range of usable sensors and detectable **FLAMMABLE** gases
Standard signal 4-20mA on 3 wires / 0-100% LEL
Zero tracker to counter possible drift
Optional RS485 interface for communication with Modbus protocol
Continuous self-diagnosis of the system
Optional 3-relay output card

**DETECTORS
OF GAS F6 /
REFRIGERANTS**



Infrared pellistor sensor
Areas classified ATEX EExd Group II / Group III / SIL 1 HW, SIL1 SW certified
Wide range of usable sensors and detectable **COOLANT** gases
Standard signal 4-20mA on 3 wires / 0-2000 ppm
Zero tracker to counter possible drift
Optional RS485 interface for communication with Modbus protocol
Continuous self-diagnosis of the system
Optional 3-relay output card

**DETECTORS
OF TOXIC GASES /
PRESENCE ASPHYXIA**



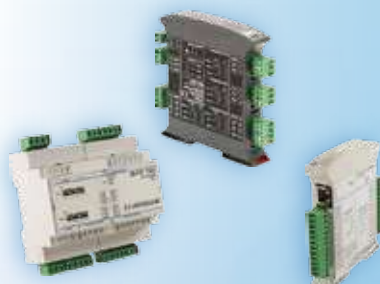
Infrared pellistor sensor / catalytic sensor
Areas classified **SAFE**
Usable sensors and gas O₂ / CO / CO₂ / NO₂
Standard signal 4-20mA on 3 wires / Range% Volume / Ppm
Zero tracker to counter possible drift
Optional RS485 interface for communication with Modbus protocol
Continuous self-diagnosis of the system
Optional 3-relay output card

**TRANSMITTERS /
CONVERTERS /
GALVANIC INSULATORS
ANALOGS**



Enclosure type: from DIN bar / DIN B head
Analog input type: Tc, RTD, Res, Pot, mV, V, Ma
N ° analogue inputs: single / double
Analog Output Type: 0-20mA, 0-10V
N ° Analog Outputs: single / double
Alarm threshold: Yes / digital output / relay output
Galvanic isolation: YES
Power supply: 20-30Vdc
Communication / Configuration: PC / DIP Switch

**REMOTE I / O MODULES
COMMUNICATION
DIGITAL**



Container type: from DIN bar
Input type: Tc, RTD, Res, Pot, mV, V, mA / digital NPN -PNP /
N ° of inputs: single input / 4 inputs / 8 inputs / 16 inputs
Output Type: 0-20mA, 0-10V / digital PNP / Relay
No. of outputs: 4 outputs / 8 outputs
Field bus communication: RS 485 MOD-BUS RTU- ASCII - / CAN OPEN
Communication / Configuration: PC) / DIP Switch
Corporate network communication: ETHERNET MOD -BUS
Communication / Configuration: INTEGRATED WEB SERVER INTERFACE
Galvanic isolation: YES
Power supply: 20-30Vdc

Enclosure format: 48 x48 / 96 x 48/96 x96
Display: 4 digit LCD + 5 alphanumeric characters - 5 digits. + 9 alphanumeric characters
Messages: programmable sliding strings with 128 characters
Selectable inputs: TC - RTD - mV -mA. V dc / strain gauge
N ° alarms: 4/8 change of display color in case of alarm
Relay output number: 2/3/7
No. of digital inputs: 2
Built-in power supply: 24 Vdc
Serial communication: RS485 MOD-BUS / DEVICE NET / PROFIBUS



INSTRUMENTATION
ELECTRONICS
DIGITAL INDICATORS

Enclosure format: 48 x48 / 48 x 96 vertical / 96 x96 / 96 x 48 horizontal
Messages: programmable sliding strings with 128 characters
Function with remote set point / analog retransmission
Freely configurable output functions: for regulation / alarms / signal retransmissions
T.A input for current measurement / partially interrupted load alarms or low insulation
Functions: integrated timer for energy totalizations
Programmer functions max. 10 with ramps - stasis - descents from 8 to 240 segments
Function: dual redundancy analog input / Zirconia sensors / math functions
RS 485 serial communication Mod Bus master / slave or Ethernet network Mod Bus TCP -IP
Available certifications: CE- UL - CSA - EAC -CCC- AMS2750



INSTRUMENTATION
ELECTRONICS
PROCESS REGULATORS

Integrated multi-loop regulation function from 2 to max 16 PID loops
Hardware modularity function I / O cards
Double / triple analog input function: for separate adjustments
Mathematical functions for adjustment: CASCADE / RATIO / OVERRIDE / ZIRCONIA
Programmer functions max. 50 with ramps - stasis - descents max. 500 segments
Functions: timer / totalizations / counter / func. math / logic function and / rx etc
Accuracy: 0.1%
Serial communication: RS 485-422-232 MOD BUS master / slave
Serial communication: PROFIBUS / DEVICE NET / EL BISYNCH
Corporate network communication Ethernet Mod Bus TCP - IP / Ethernet IP



INSTRUMENTATION
ELECTRONICS
PROCESS REGULATORS
MULTI LOOP

Display recorders: TFT 3 1/2" - / Touch screen 5.5" - 12"VGA - XGA
Inputs: 4 - 48 analog / digital inputs
Software inputs: up to 128 virtual channels
Mathematical functions / counters / totalizers / timers
Internal flash memory: 50/96 Mb / external USB memory - SD CARD 16 Gb
Double serial port: RS 422-485 Mod Bus RTU master - slave
RJ45 Ethernet port 10 / 100T Mod-bus TCP-IP - FTP - Ethernet IP server -web server
Bridge Flull software for remote parameter display and setting
REVIEW software for data storage
Batch function options / PID regulation double loop function / Programmer function



INSTRUMENTATION
ELECTRONICS
VIDEO RECORDERS

PLC versions with recording / control / actuation function
CODESIS platform programming environment
EUROTHERM function blocks: - high level PID control
- special settings Cascade / Ratio / Overraide
- recording with BATCH function
- ramps -stasis-downhill set point programmer

Complete integrated PLC function block libraries
N ° I / O that can be managed: 256 slots for number of inputs / outputs from a minimum of 4 to a maximum of 4000 total



INSTRUMENTATION
ELECTRONICS
PLC
SCADA AUTOMATION

ON / OFF VALVE ACTUATORS



SOLENOID VALVES
GENERAL APPLICATIONS



Type: Direct / indirect / mixed actuation
 Functionality: 2-way NC / NO / Universal / 3/2-way N.C / 5/2-way
 Connections: from 1/8" GAS -NPT to 3" GAS -NPT /
 Material: Brass / Brass with low lead content / Stainless steel 316
 Seals: NBR / NBR + PE / FKM / PTFE / H-NBR / EDPM / RUBY / POM
 Kv flow rate (l / min): from 0.4 to 1400 l / min
 Fluid temperature: from - 40 ° C to 90 ° C / 140 ° C / 180 ° C
 Maximum operating pressure: - 1 bar to + 40 bar
 Coil power supply: 12 -24 Vdc / 24 -110 - 230 Vac class F / H
 Certifications: CE - UL- CSA-VDE

VALVES
SPECIAL APPLICATIONS



Applications: Industrial Oxygen / High Pressure / Food NSF / Combustible Gases / ATEX /
 Applications: Hose clamp / aseptic fluid separation / Inclined seat / Coaxial / Technopolymer
 Electric control power supply: 12-24 Vdc / 24-110 - 230 Vac class F / H
 Single acting / double acting pneumatic control
 Connections: from 1/8" GAS -NPT to 2" GAS -NPT / Flanged DN15 DN100 / Push-in Ø 4-6-8 mm
 Combustible Gases: Methane, LPG, Carbon monoxide and others
 Fluid temperature: from - 40 ° C to 90 ° C / 140 ° C / 180 ° C
 Max operating pressure: - 1 bar to 150 bar
 Certifications: Food NFS / MOCA / WRASP
 Certifications: ATEX II 2G Ex d IIC T6 or T5 Gb II / 2D Ex tb IIIC T80 ° C or T90 ° C Db IP67
 Certifications: ATEX II 2G Ex mb IIC Gb / II 2D Ex mb IIIC t 130 ° C Db / IEC Ex m II T4

PROPORTIONAL VALVE ACTUATORS

VALVES
REGULATION
PNEUMATIC CONTROL



Type: GLOBE / MEMBRANE / INCLINED SEAT / BUTTERFLY / BALL valves
 Functionality: 2 PROPORTIONAL WAYS / 3/2 DIVERTER / MIXING WAYS
 Connections: from 1/8" GAS - NPT to 2" GAS NPT / Flanged DN15 DN100 / Tri-clamp / To be welded
 Material: Brass / Stainless 304 / 316L / PVDF / PP / PVC / Hastelloy -Titanium / Tantalum
 Seals: NBR / FKM / PTFE / EDPM
 Fluid temperature: from - 40 ° C to 200 ° C
 Max operating pressure: - 1 bar to 25 bar
 Kv flow rate (l / min): from 2 to 3900 l / min
 Pneumatic connections: 1/8" GAS / Push-in Ø 6 mm
 Pneumatic supply: 0.5 -7 Bar
 Integrated electro-pneumatic control: 4-20 mA / 0-10 V dc set point input signal
 Power supply: 24 V.dc
 Integrated PID regulation option: Pt100 or 4-20 mA input or 4-20 mA frequency / output
 Communication bus option: Profibus / Device Net / Ethernet IP / Profinet / Mod bus TCP
 Certifications: ATEX Exia / UL / CSA / CE / FDA / 3A / EHEDG

VALVES
REGULATION
ELECTRIC CONTROL



Type: Globe valves / Diaphragm / Inclined seat / Butterfly / Ball / Proportional solenoid valves
 Functionality: 2 PROPORTIONAL WAYS / 3/2 DIVERTER / MIXING WAYS
 Connections: from 1/8" GAS -NPT to 2" GAS NPT / Flanged DN15 - DN50 / Tri-clamp / To be welded
 Material: 304 / 316L stainless steel / PVDF / PP / PVC / Hastelloy - Titanium / Tantalum
 Seals: NBR / FKM / PTFE / EDPM
 Fluid temperature: from - 40 ° C to 200 ° C
 Max operating pressure: - 1 bar to 25 bar
 Kv flow rate (l / min): from 2 to 3900 l / min
 Electrical connections: M12 connector
 Integrated electric control: 4-20 mA / 0-10 V dc set point input signal
 Power supply: 24 V.dc
 Integrated PID regulation option: Pt100 or 4-20 mA input or 4-20 mA dc frequency / output
 Communication bus option: Profibus / Device Net / Ethernet IP / Profinet / Mod bus TCP

VALVE ACCESSORIES

Valvole di intercettazione manuale

Valvola a sfera 2- e 3-vie con filettatura G 1/4 "... G3"

Materiale: ottone nichelato / inox / Max. pressione: PN 64

Max. temperatura: 150 °C / 220 °C



Valvole regolazione manuale

Connessioni: G 1/8 ... G 2 Materiale: ottone / inox

Max. pressione: PN 250 (PN250)

Max. temperatura: 120 °C



Filtro Riduttore di secondo stadio

Connessioni 1/4 "÷ 1 1/2" Acciaio Inox 316, / Alluminio

Capacità filtrante 5-50 um / capacità tazza 500 cc

Pressione ingresso / uscita 50 / 0,8- 30 Bar / EAC, PED, Atex



Riduttore pressione 1 ° / 2 ° / 3 stadio

Connessioni filettate 1/4 "÷ 2" / Flangiate DN40-d DN 100

Materiale Acciaio Inox 316, / Alluminio

Pressione ingresso max 500 bar / uscita min 5- mBar

Fluidi aria compressa / gas / liquidi



Valvola di sfioro di 1 ° / 2 ° / 3 stadio

Connessioni filettate 1/4 "÷ 2" / Flangiate DN40-d DN 100

Materiale Acciaio Inox 316, / Alluminio

Pressione sfioro max 250 bar / minima 5- mBar

Fluidi aria compressa / gas / liquidi

Filtri ad Y

Filtrazione 20-30-80-100 Mesh

Connessioni filettate 1/4 "÷ 3" GAS / NPT

Materiale Acciaio Inox 316

Max. temperatura: 220 °C / Max. pressione: PN 55



VALVE
ACCESSORIES

ELECTRIC ACTUATORS



G.S.E.I. Controlli
Elettronica
Industriale

Models: TRIAC static relay / DOUBLE SCR static relay in antiparallel

Drive Type: Zero Crossing / Phase Angle

Load Type: Electric / Infrared Medium Wave Heaters / Primary Electric Transformers

Electric connection line: Single-phase / Double Single-phase / Three-phase / Three-phase + neutral

Control current: 5A -10A - 15A -20-A - 30A - 45A - 65A- 85A - 125A - 150A -180A -225 A

Load voltage: from 220 to 440 Vac

Control Current Signal: Logic 24 Vdc on / off / Continuous 4-20 mA / 0-10Vdc

Power supply: 24 Vdc not isolated

Integrated passive diagnostics: LED indicating the presence of the load and the control signal

Active integrated diagnostics: Out.24 Vdc alarm Fuse break / Total load break /

Out.24 Vdc SCR breakage alarm / Heatsink above 85 °C

Internal protection: RC for overvoltages / RC - Varistors for overvoltages - overcurrents

Cooling: Air with built-in fan at least 40A alim. 24 Vdc / 220Vac

Radiator overtemperature alarm: Built-in thermostat Max 80 °C N.C 2

CUSTOM executions: Single-phase / three-phase multi-zone groups max 12 SCR on a single heat sink

Mounting: DIN bar or fixing brackets

Accessories: Three-phase digital panel ammeter with load imbalance alarm threshold

Accessories: Integrated single-phase voltmeter / ammeter



UNIT
AT TRIAC
STANDARD

**UNIT
AT TIRYSTORI
EVOLVED**



Models: DOUBLE SCR static relay in antiparallel
 Drive Type: Zero Crossing / Phase Angle
 Type of control: Logic 24 Vdc on / off / Continuous 4-20 mA / 0-10Vdc
 Load Type: Short / Medium Wave Infrared Heaters / Primary Electrical Transformers /
 Electric Heaters / Silicon Carbide Heaters / Molybdenum Heaters
 Electric connection line: Single-phase /
 Double Single-phase / Three-phase / Three-phase + neutral
 Control current: from 16A to 630 A built-in electronics
 CUSTOM control current: 800 - 4000 A separate electronics
 Cooling: by air / water
 Load voltage: from 110 to 690 Vac
 Parameter configuration: integrated 4-line 10-character display + configuration keys
 Local display: Voltage / absorption / power consumption / operation alarms
 System alarm diagnostics: Mains failure / Mains voltage reduction / Fuse breakage /
 over temperature / grid frequency threshold / power module power failure
 Process alarm diagnostics: Total / partial load break / over current threshold /
 min / max threshold mains voltage / analog output short circuit / load imbalance /
 Energy meter: Measures and totalizes instant / partial and total energy consumption in Kw / h
 Communication protocols: Mod Bus Rtu / Mod Bus TCP IP / Profibus / Device Net / CanOpen / Ethernet IP / Profinet / Ethercat

ELECTRIC HEATERS



Band resistors: 80/20 Nickel Chrome Wire - Mica and Ceramic Insulation
 Diameter: from 70 to 500 mm length from 20 to 500 mm
 Operating temperatures: max. 300 ° C execution.
 Mica max. 500 ° C execution ceramic

Flat resistors: 80/20 Nickel Chrome Wire - Mica and Ceramic Insulation
 Width: minimum 15 mm / Length on request
 Electrical outputs: cable / screw terminals / connector / ceramic terminal



Resistors for nozzle: 80/20 Nickel Chrome wire - Mica insulation
 External sheet: brass with watertight terminals /
 stainless steel with closing exit terminals
 Diameter: from 20 to 100 mm length from 20 to 60 mm

Microtubular resistors: 80/20 Nickel Chrome wire - MgO insulation / stainless steel sheath
 Available sections: Ø 4.0mm / sect. square 3.2 x 3.2 4.0 x 2.5 - 4.3 x 2.2 - 3.2 x 1.8 mm
 Length development: from 250 to 1800 mm
 Special execution: with built-in thermocouple

Cartridge resistors: 80/20 Nickel Chrome wire - MgO insulation / stainless steel sheath
 Diameter: metric size from 6.5 to 20 mm / inch sizes from 1/4 "to 3/4"
 Length: from 25 to 1000 mm
 Special execution: with built-in thermocouple

Infrared resistances: 80/20 Nickel Chrome wire - Ceramic parabola insulation
 Parabola execution: Curved / Flat dimensions 122 x 60/245 x 60/122 x 122 mm
 Power: from 125 to 1000 Watts
 Special execution: with built-in thermocouple

Armored heating elements: 80/20 Nickel Chrome wire / stainless steel / copper /
 Incoloy sheath
 Diameter: metric size from 6.5 to 16 mm single-phase / three-phase execution
 Process connections: threaded from 1 "to 2 / 1/2 / flanged from DN 65 to DN 300
 Length development: from 250 to 3000 mm / IP 40/55/65 enclosure electrical protections

Finned resistors: 80/20 Nickel Chrome wire - MgO insulation / stainless steel / iron sheath
 Diameter: from 10 to 16 mm single-phase execution for static air / max 10 m / s
 Length development: from 250 to 3000 mm / Coil electrical protections IP 40/55 /
 Direct process connections: 3/8 "to 1/2 threaded

Resistors for GALVANIC: Wire Nickel Chrome 80/20 - Isolam. in ceramic or teflon /
 Monotubular execution: Porcelain / Technical glass / Quartz / Teflon / Stainless steel /
 Titanium / Teflon cable execution on protection structure: PVDF / PP material
 Execution: single-phase / three-phase
 Power: from 1000 to 12000 Watts

**ELECTRIC
HEATERS**



ELECTRONIC INSTRUMENTATION FOR HAVAC / CATERING / REFRIGERATION



ZONE room controller for regulation and control applications in radiant panel systems
ZONE room controller for air handling units
ZONE room controller suitable for all types of fan coils - FAN COIL

Antifreeze thermostats / Immersion thermostats
Duct thermostats / Room thermostats
Contact thermostats / Wall-mounted room thermostats

Differential pressure transmitter for air
CO₂, CO, VOC transmitters
Humidity and temperature transmitters
Duct / wall humidistats

Level switch
Switches for air and liquid flows
Differential pressure switch for air

Damper actuators / Spring return damper actuators
Electric actuators for motorized valves
2 and 3-way flanged valves according to DIN standards
Control valves intended for use in heating and cooling systems and ventilation



**SENSORS AND ACCESSORIES
CONDITIONING
AIR CONDITIONING**



Beverage coolers / Refrigerated counters /
Refrigerated cabinets / Refrigerated islands /
Refrigerated display cases / Ice cream and pastry counters /
Butcher's counters / Laboratory refrigerated cabinets /
Cold rooms / Temperature / humidity and seasoning cabinets /
Refrigerated display cabinets



**CONTROLLERS
FOR REFRIGERATION**

Blast chillers /
Electric ovens / Electric ovens for bread and pizza /
Combi electric ovens / Electric rotisserie ovens /
Electric ovens for gastronomy / Electric ovens for pastry /
Temperature / humidity and seasoning cabinets /
Retarder-proving cells



**CONTROLLERS
FOR CATERING**

ELECTRONIC INSTRUMENTATION FOR HAVAC / CATERING / REFRIGERATION

**CONTROLLERS
FOR THE CONDITIONING
OF AIR**



- Controllers for single-circuit and dual-circuit chillers with up to 6 compressors
- Controllers for single-circuit and dual-circuit chillers with a maximum of 3 compressors per circuit
- Sequencer for heat pumps and chillers
- Controller for heat pump DHW heaters
- Controllers for mechanical ventilation units with heat recovery
- Controllers for air renewal units with cross-beam heat recovery unit e heating coil
- Controllers for single or double flow air handling units with seasonal operation (with 1 battery) and yearly (with 2 batteries)
- Controller for dehumidifiers with heat recovery
- Autonomous module for air conditioning of 2 zones

**CONTROLLERS
PLC PROGRAMMABLE**



- Dimensions: 4/8/10 DIN modules
- Analogue inputs: n ° from 10 to 16 inputs for sensors PTC-NTC-PT1000-4-20 mA - 0-10V-0-5V
- Digital inputs: n ° from 5 to 9 inputs Logic on / off PNP-NPN 24 Vdc / clean contact / clean contact pulse trains up to 2 KHz
- Analog outputs: 3 to 8 0-10 Vdc outputs / PWM pulse train logic
- Digital outputs: n ° from 6 to 14 SPST - SPDT @ 2 -3-8 A electromechanical relay outputs
- Communication ports:
 - TTL Modbus / Intrabus / RS-485 Modbus slave
 - RS-485 (Modbus master / slave, BACnet MS / TP)
 - Can-Open / USB / Ethernet (MODBUS TCP, Web Server, BACnet IP)

We also supply the following brands for industrial automation

SCHMERSAL
Safe solutions for your industry



LED2WORK



3GP



ELMAC



nvent



**MURR
ELEKTRONIK**



bürkert
FLUID CONTROL SYSTEMS



EUROPOLY
Il riferimento poliestere



SERVICES

TECHNICAL SERVICES THERMAL PROCESS CONTROL



- ✓ Support and Start-Up for electronic controllers PID controls on industrial plants and machines
- ✓ Technical and application consultancy for the control and measurement of temperature in industrial processes
- ✓ Pyrometric controls in accordance with AMS27-50 F
- ✓ On-site services for thermal uniformity (TUS) and accuracy (SAT) control tests
- ✓ System checks of oven tools

CALIBRATION & CERTIFICATION SERVICES



- ✓ We perform calibration services for instrumentation and sensors with the release of ACCREDIA and ISO certificates
- ✓ Verifications in the laboratory or in the instrumentation field using sensors and field test or second line calibrators for temperature pressure humidity measurements with release of certificates

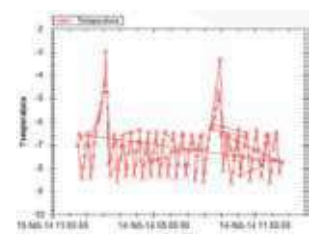
INDUSTRIAL AUTOMATION SERVICES

- ✓ Study and delivery of electrical command and control systems
- ✓ Robot integration
- ✓ Development of palletising systems with integrated traceability
- ✓ Development of integrated vision systems



INDUSTRIAL SOFTWARE LOGGER / TRACK / VIEW SERVICES

- ✓ Remote assistance on systems
- ✓ Support of network services for data management
- ✓ Interfacing with databases (SQL Server - MySQL)
- ✓ Software development for .NET room supervision systems (licence free)
- ✓ Software development for commercial supervision systems (WinCC - Climpicity - Intouch)



TECHNICAL TRAINING SERVICES

We carry out EURO THERM technical courses aimed at all technical operators and maintenance workers of industrial plants

Technical courses **Eurotherm**
by **Schneider Electric**



- ✓ Theory and functioning of SCR static units
- ✓ PID regulation theory
- ✓ Eurotherm PLC control unit
- ✓ Eurotherm Data Recording and Management Unit



GLOBAL s.r.l.
TRADE

Global Trade srl since 1995 is organized to respond in real time to market needs with innovative products respecting rigorous and modern order management criteria.



It forms a synergistic group together with the company Global Infotech srl and Ellegi Electron sas, based in Turin where it has commercial, administrative offices and the product warehouse. Through the Rome office it covers Central-Southern Italy.



The company has always offered itself to its customers as a reliable and sensitive partner to problems related to industrial plant engineering. Fundamental, in such a delicate sector, is the technical assistance offered to solve doubts and problems that arise during the design phase. Prices, discounts and delivery times are competitive and make the difference !!

GLOBAL TRADE srl
globaltr@tin.it
www.globaltr.it

GLOBAL INFOTECH srl
globalinfotech@tin.it
www.global-infotech.it

ELLEGI ELECTRON sas
ellegiel@tin.it
www.globaltr.it